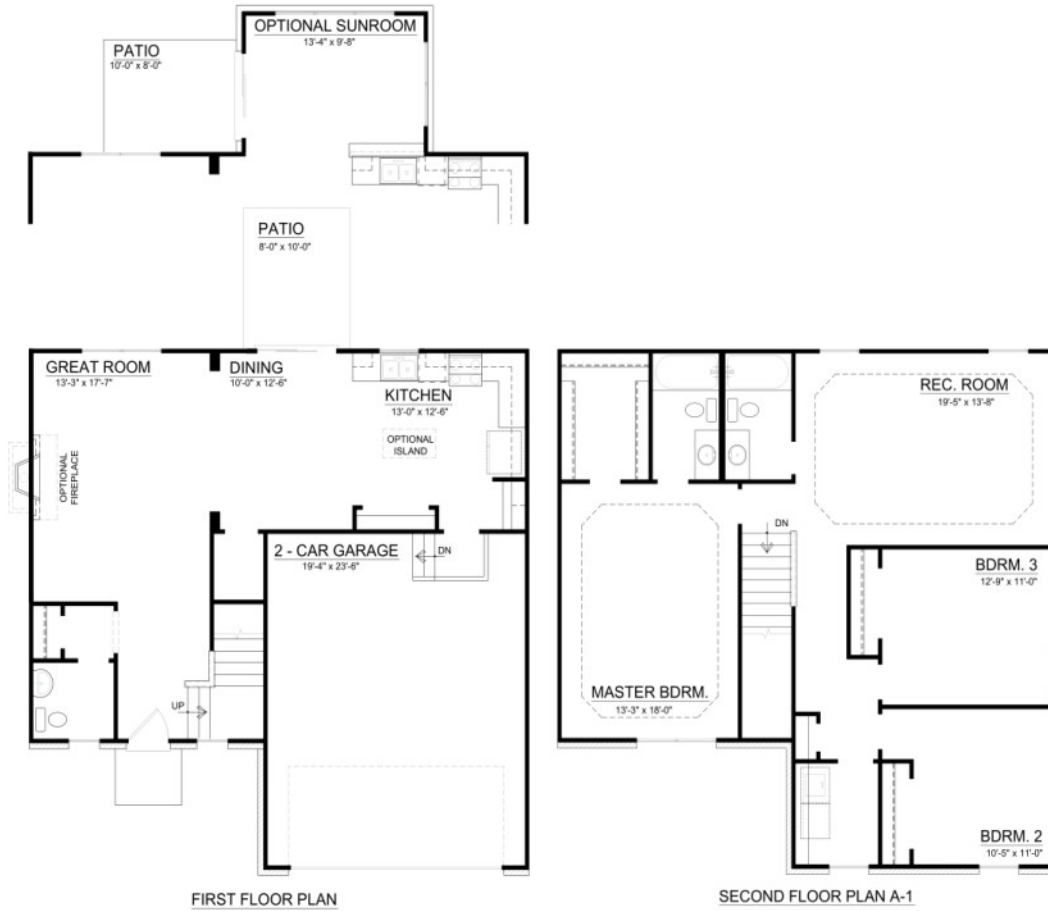


The Maplewood

3 BEDROOMS / 2.5 BATH / 2 CAR GARAGE / REC ROOM / 2023 SQUARE FEET



Prices, features and square footage are subject to change without notice.
Rendering may vary in precise detail from actual construction, all dimensions are approximate.
HND Homes 2011

Keeneland Downs Included Features

INTERIOR FINISHES

- 9' smooth finish ceilings
- Flat Panel cabinetry with hardware
- Post Form Laminate countertops in kitchen
- Cultured Marble Bathroom Vanities
- Wood base trim 3 ¼"

ELECTRICAL & APPLIANCE

- Whirlpool kitchen appliances include: electric range, dishwasher, over-the-range hood
- Designer lighting package
- Cable TV connections and wiring for telephone connections at convenient locations
- Electrical outlets, Safety GFI outlets, & smoke detectors
- Front & rear exterior electrical outlet
- Exterior Lighting Fixtures
- Doorbell at entry

PLUMBING

- Quick recovery 50 gallon electric water heater
- 8" deep stainless steel double-sized kitchen sink with vegetable sprayer
- Ice maker hookup
- Washerless 4" dual handle sets & chrome faucets in bathrooms
- Front and rear hose bibs

HEATING/COOLING/ENERGY FEATURES

- Energy efficient insulation: R-13 exterior walls, R-38 in ceilings
- Energy efficient electric heat & air

SAFETY FEATURES

- Smoke detectors
- Deadbolt front and rear
- Security System
- Handrail per codes

EXTERIOR FINISHES

- Maintenance free vinyl siding & soffits
- 30-year algae resistant shingles
- Concrete driveway or parking pad
- Steel Garage Doors
- 100% OSB sheathing and house wrap vapor barrier
- Baked enamel finish aluminum gutters & downspouts with splash blocks
- 8'x10' Concrete Patio or 10'x12' Deck (Patio or Deck as lot allows, to be determined by Builder)
- Termite Pre-Treatment

WINDOWS/EXTERIOR DOOR

- Insulated maintenance free vinyl windows w/screens-20 year glass warranty and tilt sash for easy cleaning
- Insulated fiberglass front door with rot-free trim
- Insulated steel door at garage

FLOOR COVERING

- No wax vinyl flooring at entry, and in kitchen, dining, master bath, guest bath and laundry room
- Designer carpet with upgraded 6lb. pad in all other areas

HARDWARE/SHELVING/MIRRORS

- Deadbolt locks on front
- Privacy locks for bedrooms and baths
- Coated wire shelving with free slide hanger bar w/life time guarantee
- Triple hinged interior doors
- Brushed Chrome door hardware

WARRANTY

- One year Builder Warranty
- 2/10 Bonded Builder's Warranty plan

LANDSCAPING

- Designer shrubs, trees and hardwood mulch package