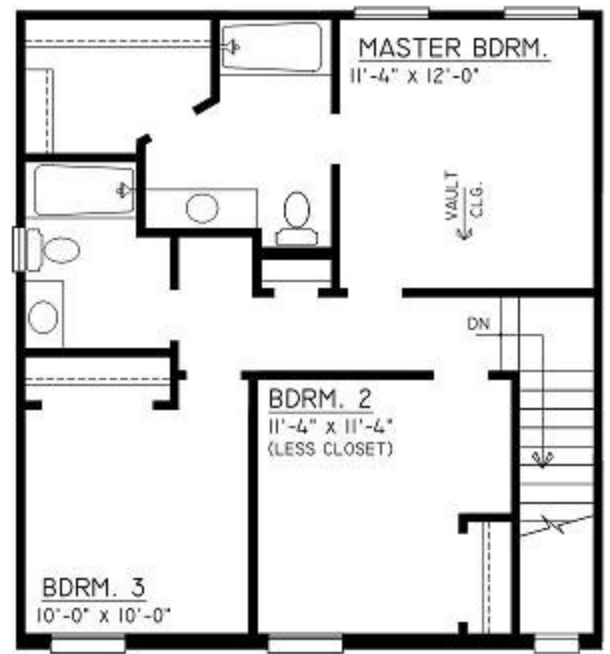


The Bradford

3 BEDROOMS / 2.5 BATH / 1422 SQUARE FEET



*Prices, features and square footage are subject to change without notice.
Rendering may vary in precise detail from actual construction, all dimensions are approximate.
HND Homes 2011*

Fawn Crossing

Included Features

INTERIOR FINISHES

- 9' smooth finish ceilings
- Santa Fe Style Interior doors
- Maple Flat Panel cabinetry with hardware
- Wilsonart Laminate countertops in kitchen
- Cultured Marble Bathroom Vanities
- Raised height master bath vanity
- Wood base trim 3 ¼"

ELECTRICAL & APPLIANCES

- Whirlpool kitchen appliances include: self cleaning electric range, dishwasher, over-the-range hood & disposal
- Designer lighting package
- Overhead lights in all bedrooms
- Master Bedroom & Living Room pre-wired for ceiling fans
- 5 cable TV connections at convenient locations
- Wiring for 2 telephones at convenient locations
- Electrical outlets, Safety GFI outlets, & smoke detectors
- Front & rear exterior electrical outlet
- Exterior Lighting Fixtures
- Doorbell at entry

PLUMBING

- Quick recovery 50 gallon electric water heater
- 8" deep stainless steel double-sized kitchen sink with vegetable sprayer
- Ice maker hookup
- MOEN 4" dual handle sets & chrome faucets in bathrooms
- Side and rear hose bibs

HEATING/COOLING/ENERGY FEATURES

- Energy Star Certified Home
- Goodman 15 Seer energy efficient electric heat & air
- Energy efficient insulation: R-13 exterior walls, R-38 in ceilings

SAFETY FEATURES

- Smoke detectors
- Deadbolt front and rear
- Security System
- Handrail per codes

*These specifications are dependant on the single- stall garage.

**Storage area is standard when a garage is not included.

EXTERIOR FINISHES

- Brick fronts with maintenance free vinyl siding & soffits
- Owens Corning 25-year algae resistant shingles
- Concrete driveway and/or parking pad
- Steel Garage Doors w/ ½ HP opener*
- Large capacity storage area**
- 100% OSB sheathing and house wrap vapor barrier
- Baked enamel finish aluminum gutters & downspouts with splash blocks
- 8'x10' Concrete Patio or Deck (per plan)
- Termite Pre-Treatment

WINDOWS/EXTERIOR DOOR

- Silverline Low-E Energy Star maintenance free windows w/screens
- Insulated fiberglass six panel style front door with rot-free trim
- Insulated steel six panel style door at storage area or garage
- Wood molding window sill with wood apron below

FLOOR COVERING

- No wax Armstrong vinyl flooring at front entry and garage entry*
- No wax Armstrong vinyl flooring in kitchen, master bath, guest bath and laundry room
- Designer carpet with upgraded 6lb. pad in all other areas

HARDWARE/SHELVING/MIRRORS

- Deadbolt locks on front, side & storage ext. doors*
- Privacy locks for bedrooms and baths
- Coated wire shelving with free slide hanger bar
- Triple hinged interior doors
- Satin nickel door hardware

WARRANTY

- One year Builder Warranty
- 2/10 Bonded Builder's Warranty plan

LANDSCAPING

- Landscape package includes shrubs, tree and hardwood mulch